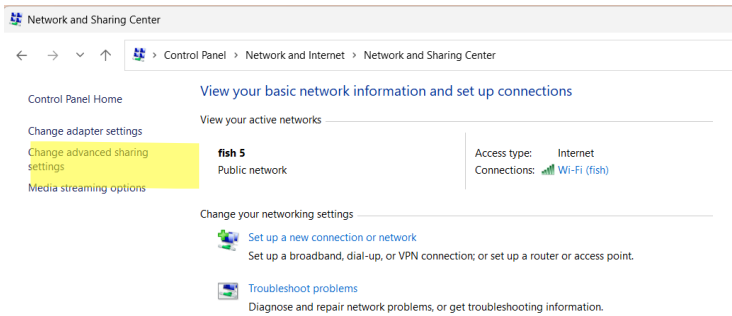


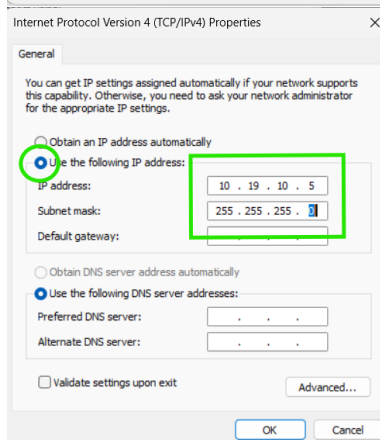
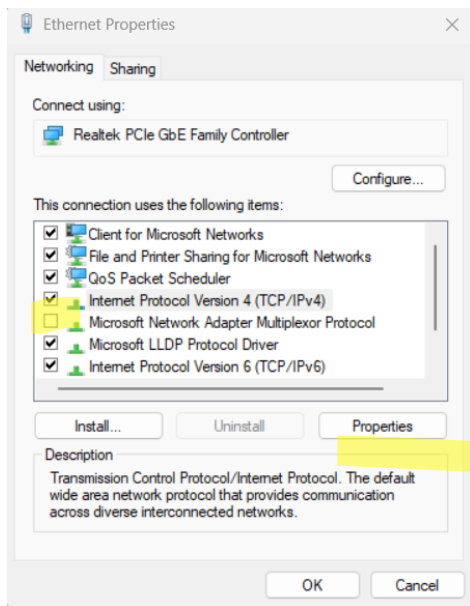
Set Computer on a hard IP for use with FinishLynx Cameras for best results

Control Panel > Network and Internet > Network Sharing Center #Change Adapter Settings#



Right Click on Ethernet and Choose Properties

Left Click on Internet Protocol Version 4 (TCP/IPv4) and left click on Properties.



Select “Use the following IP Address” and set to a private IP range and number:
Private IP: These addresses (like those starting with 10., 192.168.) are for internal use only and are set aside by internet standards, so they don't conflict with public addresses.

Most common are 10.19.1.XX or 192.168.1.XX. Many timers with chip systems, display boards, or other set IP addresses will want to use the IP scheme which matches your timing system IP addresses. Lynx QSG will say to use 192.168.1.5, but that is NOT REQUIRED.

Hit OK.

Note: there must be no other IP device within the first few numbers after the last number selected. If you end with .5, then the cameras will assume .6 and .7 (assuming a vision and identilynx) and so forth if using a third camera.