



MichianaTiming.com is a dealer of Lynx Photo Finish and Fully Automatic Timing Products and of IPICO Chip Timing and Fitness Evaluation Hardware. We also use the equipment daily, weekly and monthly at over 250 events per year where we provide timing services.

In order to assist our customers of Lynx and IPICO Equipment and because we like to continuously improve our own service, we regularly test different aspects of usage of both hardware and software. When we feel it is appropriate we issue a white paper such as this on a subject.

IdentiLynx Active Area

(Determining what area of an image triggers automatic-motion sensitive capture with IdentiLynx)

Basic Understanding of IdentiLynx:

The IdentiLynx camera is a camera that takes still images at a set frame rate. When put together the image captured look much like a movie because they are taken in fairly rapid succession. They can be time sequenced with a side image taken with an EtherLynx side camera, or used independently.

Lynx currently offers three such cameras:

30fps standard IdentiLynx

30fps pro XR (extra resolution)

60fps pro XS (extra speed)

When they are used with an EtherLynx camera, most operators use the internal photo eye (auto-capture module) on the side camera to determine when a picture should or should not be taken. Some operators, however, use “IdentiLynx (Automatic Motion)” to decide when to capture motion. This is required in fact if you are using the camera without a side camera as many now do at road race events, bike races, etc.

Because many environments will have constant motion in the field of view they would constantly trigger. To avoid this, you can set the area of the image that will trigger a capture.

Dealers of **IPICO Chip Timing Systems** and **Lynx FAT Systems** and Photofinish Cameras





Setting the Threshold, Leader and Trailer:

Under camera information settings (hardware control (alt+1) click on the name of your camera, then click the blue circle i icon. Under the Capture tab, set the threshold, leader and trailer.

A higher number for leader and trailer captures more image before and after the camera sees that it should be capturing. It continuously buffers so it will back up the requested number of images (the leader) and continue saving images from that point until the requested number of images (the trailer) after it sees that it should no longer be capturing.

Camera Information: Only use Automatic (Identilynx Motion) if you know what you are doing! Define an active area to avoid continuous capture. Turn up Leader/Trailer perhaps (15 max); determine a good threshold so you get all captures (lower = will capture more).

The active area is by percentage of total pixels of the image.

A lower number under threshold makes the camera more sensitive. It is the percentage of change in image it must see before it says “hey I’m supposed to be taking a picture”. A higher number makes it less sensitive. So for example if you are on a course with blowing leaves, snow or rain, you might want to try a higher number. If you have a still area, a higher number might be okay.

Dealers of **IPICO Chip Timing Systems** and **Lynx FAT Systems** and Photofinish Cameras

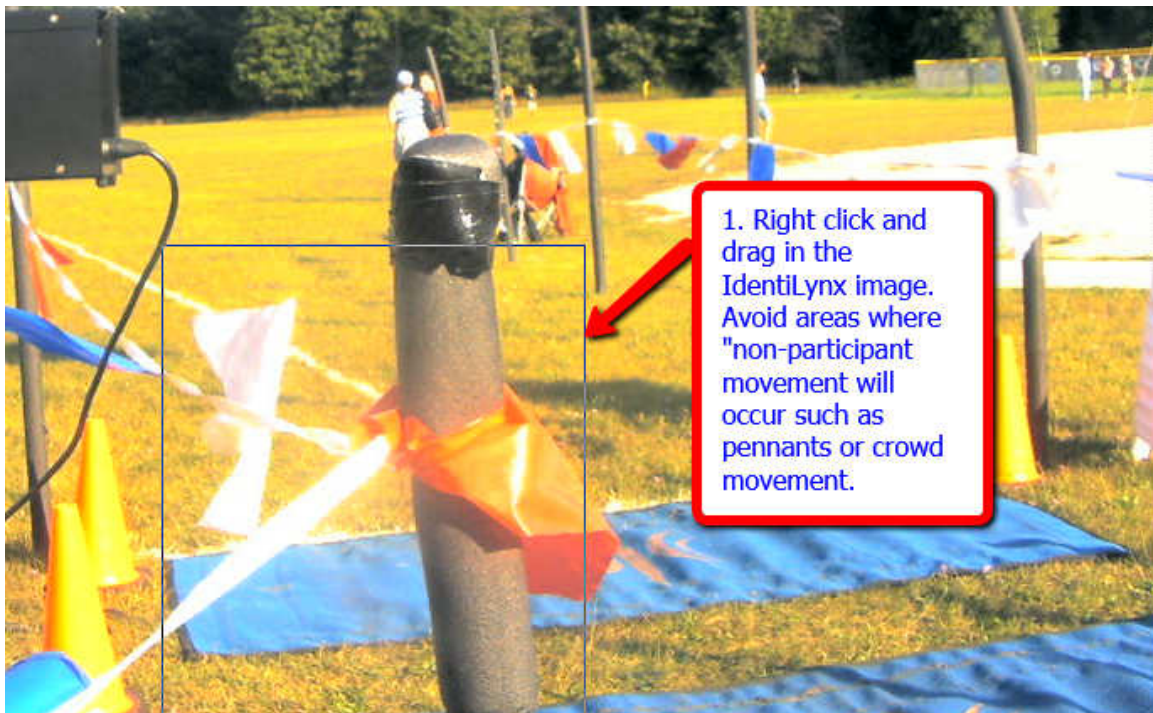




Set the active area:

So if you have activity in the field of view like crowds or pennants blowing, you can exclude those from the area triggering capture. In the IdentLynx image right click and drag the area where you think there will be participants, but where there is unlikely to be extraneous movement or change in the picture.

Then click on Image > Set > Active Area and the highlighted area will become the area of the picture used to trigger capture. When the percentage of pixels specified in the threshold are detected to have changed, the image including the leader and trailer will be saved. You may also set the active area under the capture tab of image information shown in yellow above, but dragging the active area is usually easier. The numbers shown are percentage of the picture with 0,0 being top left and 100,100 being bottom right.

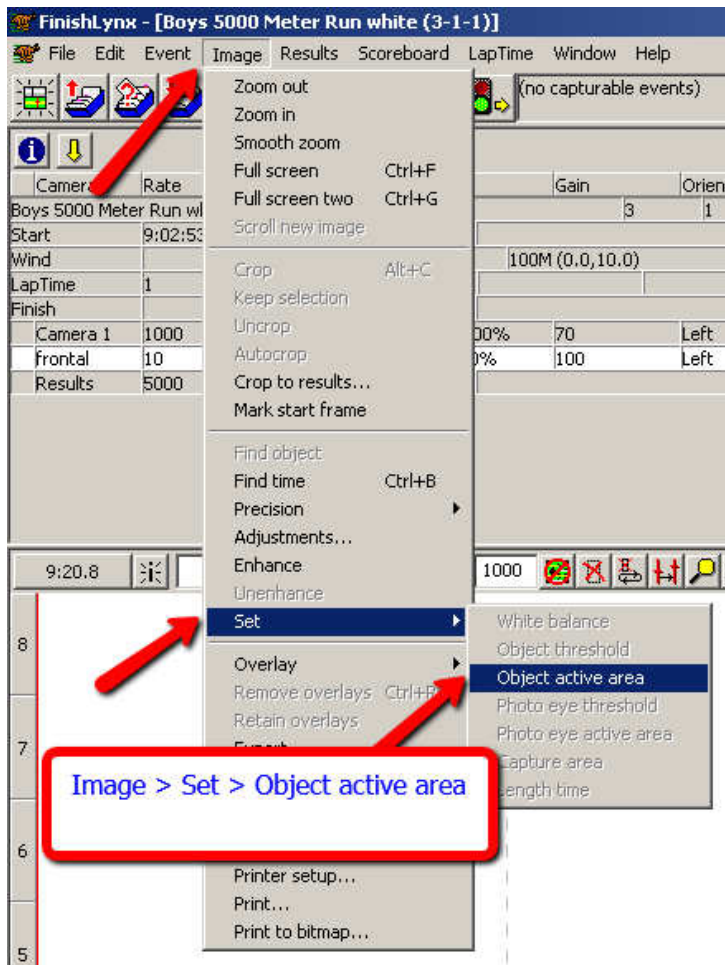


Dealers of **IPICO Chip Timing Systems** and **Lynx FAT Systems** and Photofinish Cameras





Confirm the area you wish active by clicking Image > Set > Object active area.



Enable capture and you should be ready to roll.

NOTE ON NEW IdeniLynx – must run in administrator mode: Some operators are having difficulty with newer cameras booting to 32% and hanging. Please run Lynx software in “administrator mode” and this issue should resolve. Many operators are setting “administrator mode” under their shortcuts to always be sure of mode.

Dealers of **IPICO Chip Timing Systems** and **Lynx FAT Systems** and **Photofinish Cameras**



A DIVISION OF MICHIGANCROSSCOUNTRY.COM LLC
michiana timing
TIMING PROFESSIONALS
Contact 616-821-3156 for service or updates



If you have questions please call or email events@michianatiming.com. We offer FinishLynx and IPICO Training on-site or via electronic/phone/video conference . Should you ever wish to expand your timing equipment with additional Lynx or IPICO equipment, we'd be happy to hear from you as well.

If you found this helpful, please let us know. If we can improve it in any way, feedback is welcomed.

Copyright MichianaTiming.com LLC 2014
553 Parkovash Avenue
South Bend, IN 46617
(616) 453-7887

Dealers of **IPICO Chip Timing Systems** and **Lynx FAT Systems** and Photofinish Cameras





MichianaTiming.com is a dealer of Lynx Photo Finish and Fully Automatic Timing Products and of IPICO Chip Timing and Fitness Evaluation Hardware. We also use the equipment daily, weekly and monthly at over 250 events per year where we provide timing services.

In order to assist our customers of Lynx and IPICO Equipment and because we like to continuously improve our own service, we regularly test different aspects of usage of both hardware and software. When we feel it is appropriate we issue a white paper such as this on a subject.

IdentiLynx Active Area

(Determining what area of an image triggers automatic-motion sensitive capture with IdentiLynx)

Basic Understanding of IdentiLynx:

The IdentiLynx camera is a camera that takes still images at a set frame rate. When put together the image captured look much like a movie because they are taken in fairly rapid succession. They can be time sequenced with a side image taken with an EtherLynx side camera, or used independently.

Lynx currently offers three such cameras:

30fps standard IdentiLynx

30fps pro XR (extra resolution)

60fps pro XS (extra speed)

When they are used with an EtherLynx camera, most operators use the internal photo eye (auto-capture module) on the side camera to determine when a picture should or should not be taken. Some operators, however, use “IdentiLynx (Automatic Motion)” to decide when to capture motion. This is required in fact if you are using the camera without a side camera as many now do at road race events, bike races, etc.

Because many environments will have constant motion in the field of view they would constantly trigger. To avoid this, you can set the area of the image that will trigger a capture.

Dealers of **IPICO Chip Timing Systems** and **Lynx FAT Systems** and Photofinish Cameras

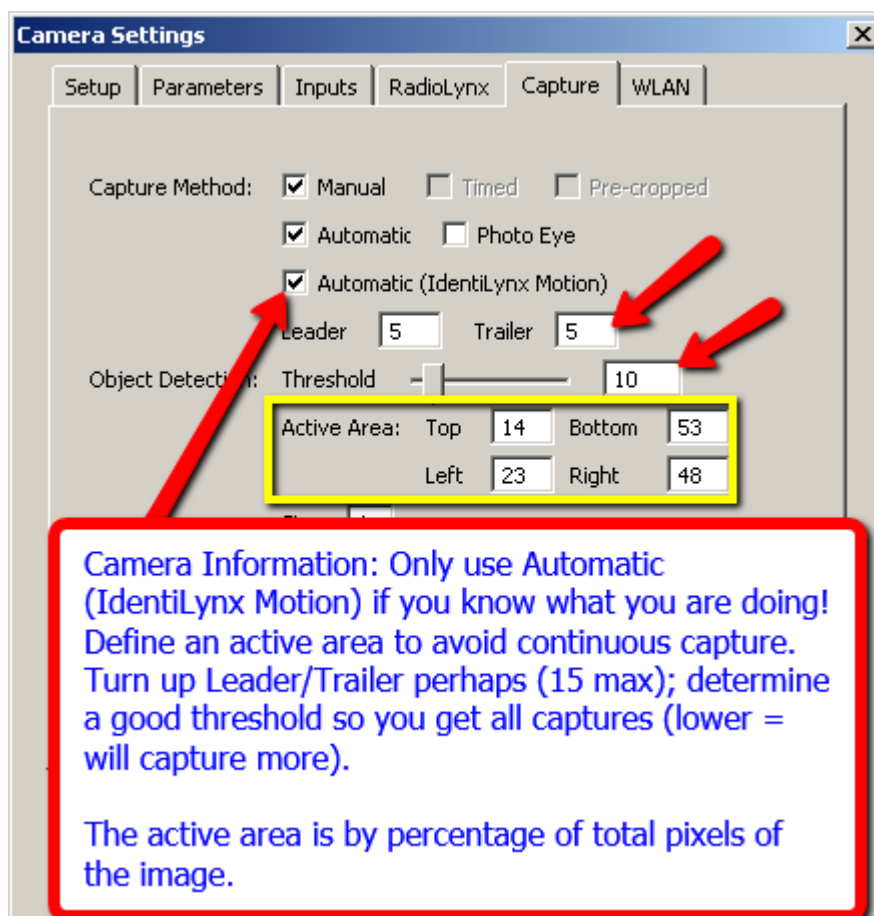




Setting the Threshold, Leader and Trailer:

Under camera information settings (hardware control (alt+1) click on the name of your camera, then click the blue circle i icon. Under the Capture tab, set the threshold, leader and trailer.

A higher number for leader and trailer captures more image before and after the camera sees that it should be capturing. It continuously buffers so it will back up the requested number of images (the leader) and continue saving images from that point until the requested number of images (the trailer) after it sees that it should no longer be capturing.



Camera Information: Only use Automatic (Identilynx Motion) if you know what you are doing! Define an active area to avoid continuous capture. Turn up Leader/Trailer perhaps (15 max); determine a good threshold so you get all captures (lower = will capture more).

The active area is by percentage of total pixels of the image.

A lower number under threshold makes the camera more sensitive. It is the percentage of change in image it must see before it says "hey I'm supposed to be taking a picture". A higher number makes it less sensitive. So for example if you are on a course with blowing leaves, snow or rain, you might want to try a higher number. If you have a still area, a higher number might be okay.

Dealers of **IPICO Chip Timing Systems** and **Lynx FAT Systems** and Photofinish Cameras

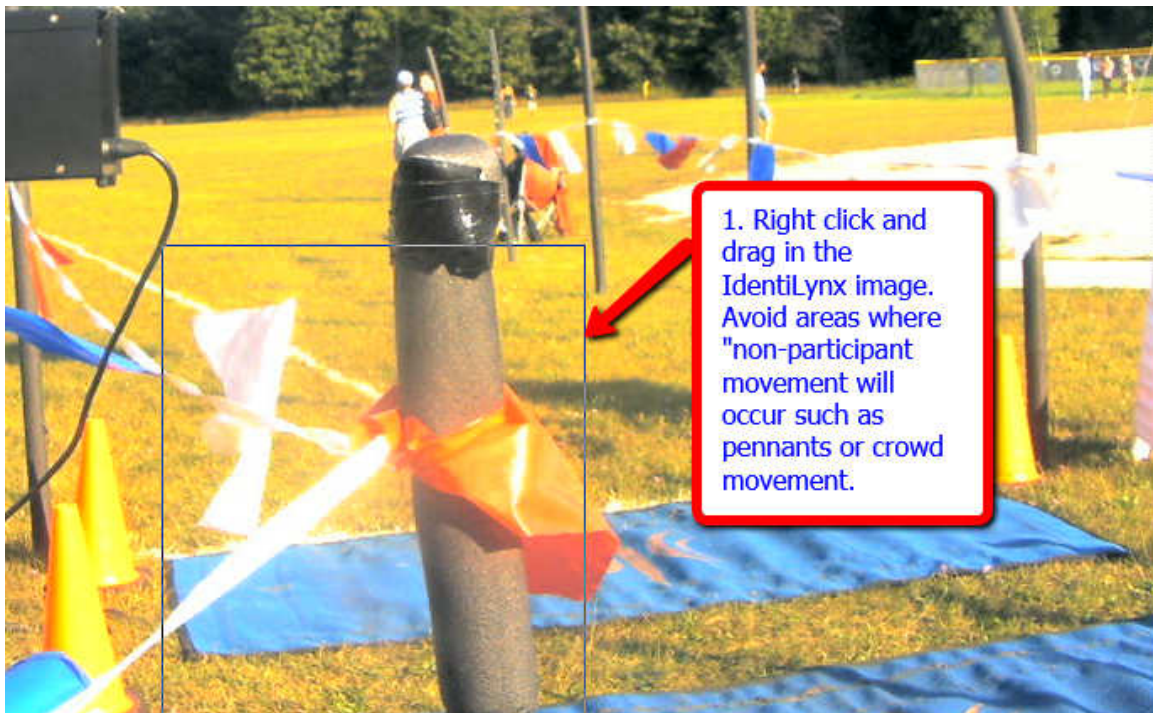




Set the active area:

So if you have activity in the field of view like crowds or pennants blowing, you can exclude those from the area triggering capture. In the IdentLynx image right click and drag the area where you think there will be participants, but where there is unlikely to be extraneous movement or change in the picture.

Then click on Image > Set > Active Area and the highlighted area will become the area of the picture used to trigger capture. When the percentage of pixels specified in the threshold are detected to have changed, the image including the leader and trailer will be saved. You may also set the active area under the capture tab of image information shown in yellow above, but dragging the active area is usually easier. The numbers shown are percentage of the picture with 0,0 being top left and 100,100 being bottom right.

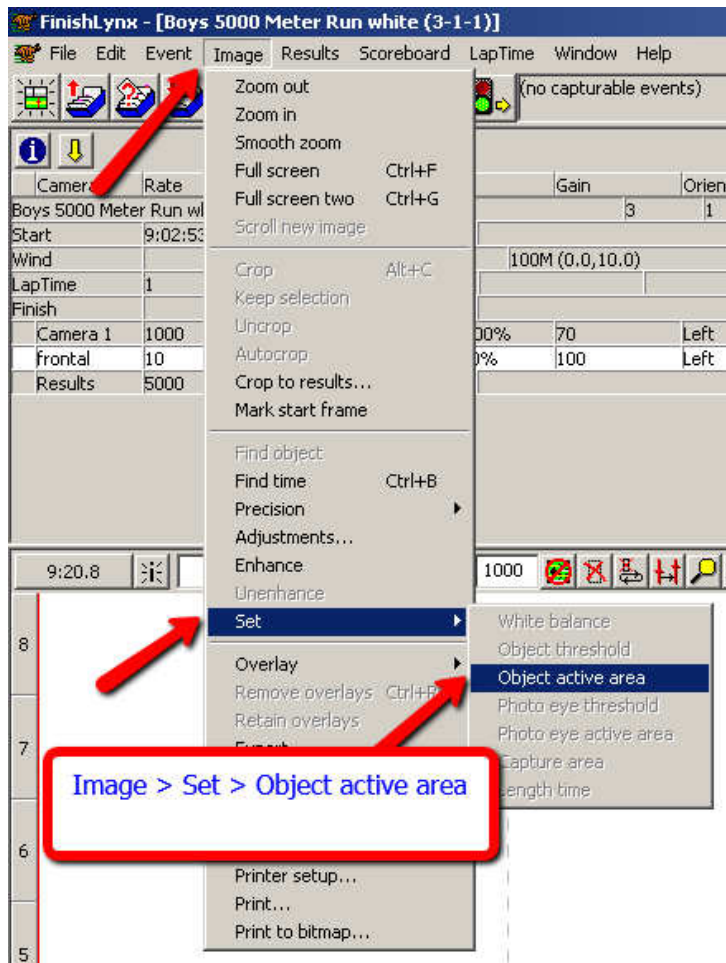


Dealers of **IPICO Chip Timing Systems** and **Lynx FAT Systems** and Photofinish Cameras





Confirm the area you wish active by clicking Image > Set > Object active area.



Enable capture and you should be ready to roll.

NOTE ON NEW IdeniLynx – must run in administrator mode: Some operators are having difficulty with newer cameras booting to 32% and hanging. Please run Lynx software in “administrator mode” and this issue should resolve. Many operators are setting “administrator mode” under their shortcuts to always be sure of mode.

Dealers of **IPICO Chip Timing Systems** and **Lynx FAT Systems** and **Photofinish Cameras**



A DIVISION OF MICHIGANCROSSCOUNTRY.COM LLC
michiana timing
TIMING PROFESSIONALS
Contact 616-821-3156 for service or updates



If you have questions please call or email events@michianatiming.com. We offer FinishLynx and IPICO Training on-site or via electronic/phone/video conference . Should you ever wish to expand your timing equipment with additional Lynx or IPICO equipment, we'd be happy to hear from you as well.

If you found this helpful, please let us know. If we can improve it in any way, feedback is welcomed.

Copyright MichianaTiming.com LLC 2014
553 Parkovash Avenue
South Bend, IN 46617
(616) 453-7887

Dealers of **IPICO Chip Timing Systems** and **Lynx FAT Systems** and Photofinish Cameras

